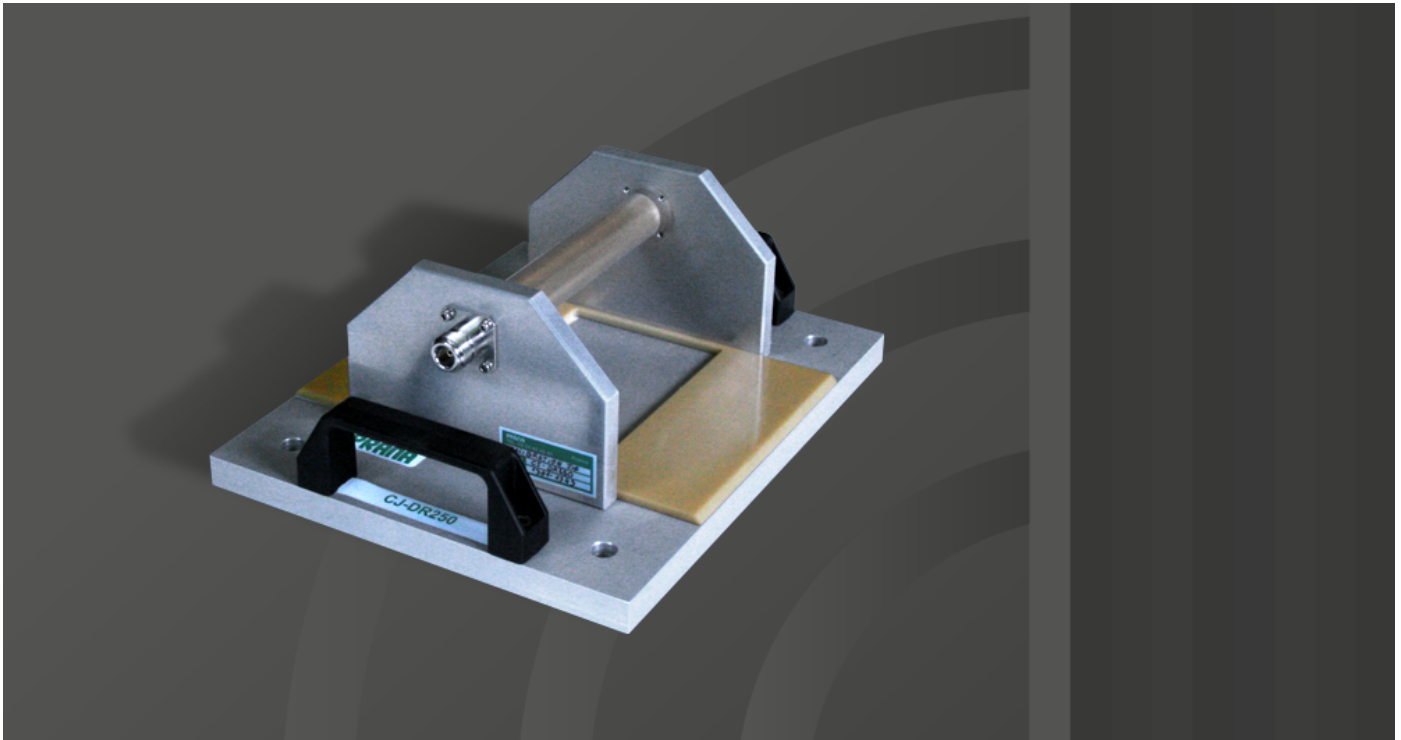


# CJ-DR250

Accessories: 4 kHz - 400MHz / 500 W CW



## Prana CJ-DR250

- Calibration JIG for IP-DR250
- N connectors

## Accessories

- CJ-DR250 => 500 W CW
- IP-DR250 => 500 W CW

## Maintenance

- Rapid diagnostic
- Minimal downtime
- Contract for preventive and corrective maintenance available

## Applications

- Could be used for EMC standards :
  - DO 160 D
  - Mil STD 461
  - Automotive standards: PSA, Renault, Ford, Daimler Chrysler...
  - ISO 11452-4
  - SAE J1113-4
  - ...

**4TECT**

ООО «4TECT»

Телефон: +7 (499) 685-4444

info@4test.ru

[www.4test.ru](http://www.4test.ru)

# CJ-DR250

Accessories: 4 kHz - 400MHz / 500 W CW

## Specifications

Frequency Range .....	0.01 - 400 MHz
Window diameter .....	43.8 mm
RF input connector .....	Type "N" Female
Maximum input Power .....	500 W

**4TECT**

ООО «4TECT»

Телефон: +7 (499) 685-4444

info@4test.ru

[www.4test.ru](http://www.4test.ru)